



2 Gatliff Road, London  
SW1W

GARTON JONES.COM



2 Gatliff Road, London  
, SW1W

GARTON JONES.COM

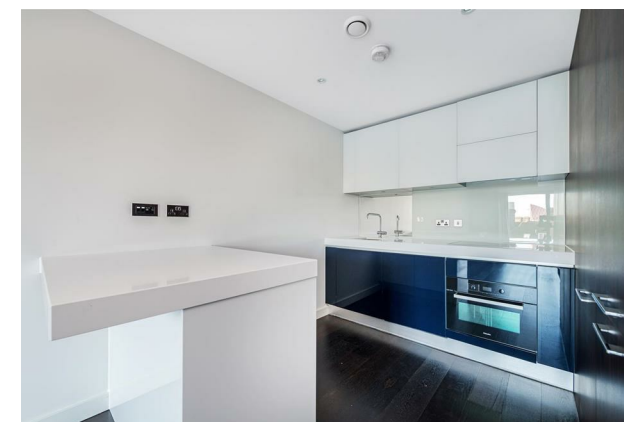
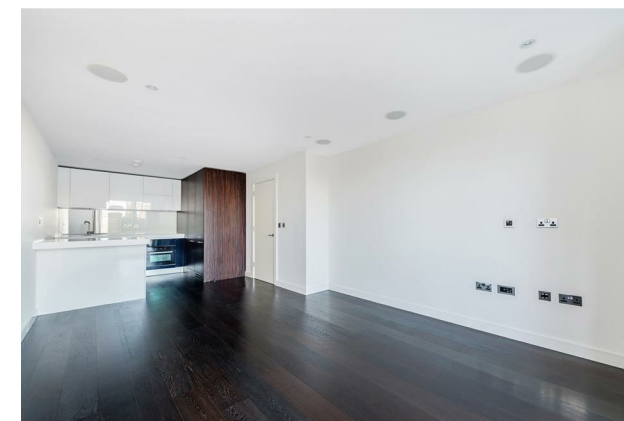
8 Gatliff Road  
Chelsea  
London  
SW1W 8DP

Lettings:  
+44 (0) 20 7730 5007  
gws@gartonjones.com  
www.gartonjones.com

£595 Per Week

A 1 bedroom apartment to rent of approx. 605sq.ft (56.2sq.m) in Moore House, one of the buildings forming the popular Grosvenor Waterside development, located close to the banks of the River Thames by Chelsea Bridge. This unfurnished apartment further benefits from an open plan reception room, a smart kitchen with Miele integrated appliances including a wine cooler, wood flooring, comfort cooling, modern bathroom, excellent storage including a utility cupboard housing a Bosch washer dryer and built in wardrobes to the master bedroom. There is secure underground parking and as a resident you will also benefit from a 24 hour concierge service, a smart leisure suite with gym and spa facilities, there is an on-site Sainsbury's, a coffee shop & bakery, crèche and a Purple Dragon private kids club. You will be within walking distance to the amenities and transport links of both Sloane Square and Victoria including the Gatwick Express rail connection.

- 605sq.ft (56.2sq.m)
- 1 Double Bedroom
- Luxury Bathroom Suite
- Dual Aspect Open Plan Reception Room
- Kitchen with Miele Integrated Appliances
- 24 Hour Concierge
- Secure Underground Parking
- Gym with Spa Facilities
- On-Site Sainsbury's, Coffee Shop & Bakery, Purple Dragon Private Kids Club & Crèche
- Walking Distance to Sloane Square & Victoria Station



GARTON JONES.COM



